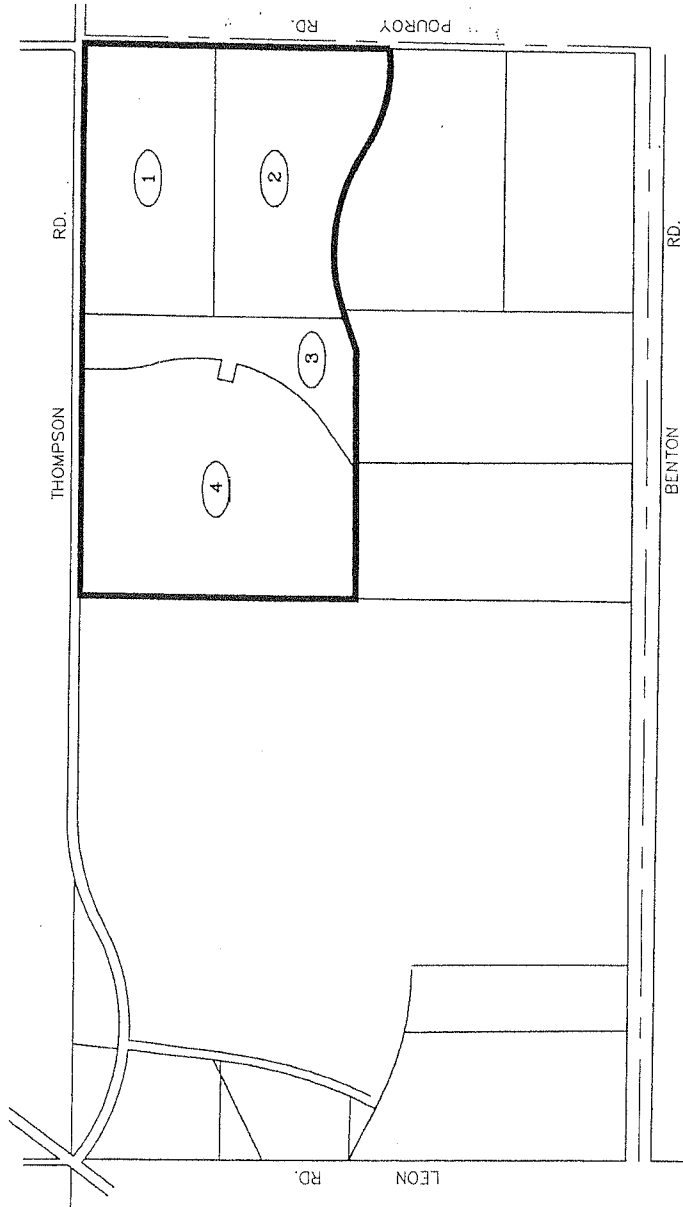


PROPOSED BOUNDARY MAP OF COMMUNITY FACILITIES DISTRICT NO. 2003-2

OF THE
TEMECULA VALLEY UNIFIED SCHOOL DISTRICT
COUNTY OF RIVERSIDE
STATE OF CALIFORNIA



LOT DESIGNATION

LOT	ASSESSOR'S PARCEL NO.
1	958-300-039
2	958-300-080
3	958-300-088
4	958-300-089

FILED IN THE OFFICE OF THE SECRETARY OF THE BOARD OF EDUCATION OF THE TEMECULA VALLEY UNIFIED SCHOOL DISTRICT THIS ~~20th~~ **21st** DAY OF ~~SEPTEMBER~~ **OCTOBER**, 2003.

Daniel Adams
DANIEL ADAMS
SECRETARY OF THE BOARD OF EDUCATION
TEMECULA VALLEY UNIFIED SCHOOL DISTRICT
STATE OF CALIFORNIA

I HEREBY CERTIFY THAT THE WITHIN MAP SHOWING THE PROPOSED BOUNDARIES OF COMMUNITY FACILITIES DISTRICT NO. 2003-2, RIVERSIDE COUNTY, STATE OF CALIFORNIA, WAS APPROVED BY THE BOARD OF EDUCATION OF THE TEMECULA VALLEY UNIFIED SCHOOL DISTRICT AT A REGULAR MEETING THEREOF HELD ON THE ~~20th~~ **21st** DAY OF ~~SEPTEMBER~~ **OCTOBER**, 2003, BY ITS RESOLUTION NO. ~~2003-0404~~ **2003-0405**.

Daniel Adams
DANIEL ADAMS
SECRETARY OF THE BOARD OF EDUCATION
TEMECULA VALLEY UNIFIED SCHOOL DISTRICT
STATE OF CALIFORNIA

FILED THIS ~~20th~~ **21st** DAY OF ~~SEPTEMBER~~ **OCTOBER**, 2003, AT THE HOUR OF ~~8~~ **9** O'CLOCK ~~A~~ **P** M. IN BOOK ~~55~~ **56** OF MAPS OF ASSESSMENT AND COMMUNITY FACILITIES DISTRICTS AT PAGES ~~5~~ **6** AND AS INSTRUMENT NO. ~~2003-02781~~ **2003-02782** IN THE OFFICE OF THE COUNTY RECORDER OF RIVERSIDE COUNTY, STATE OF CALIFORNIA.

GARY L. ORSO
COUNTY RECORDER OF RIVERSIDE COUNTY

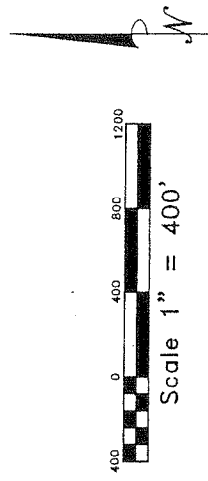
Gary L. Orso
DEPUTY

NOTE: FOR PARTICULARS OF LINES AND DIMENSIONS OF ASSESSOR'S PARCELS, REFERENCE IS MADE TO THE RIVERSIDE COUNTY ASSESSOR PARCEL MAPS.

LEGEND

CFD BOUNDARY

LOT DESIGNATION



Special District Financing
& Administration
333 South Juniper Street, Suite 208
Escondido, California 92025
Tel: (760) 233-2630 Fax: (760) 233-2631

(02-009 AUGUST 2003)