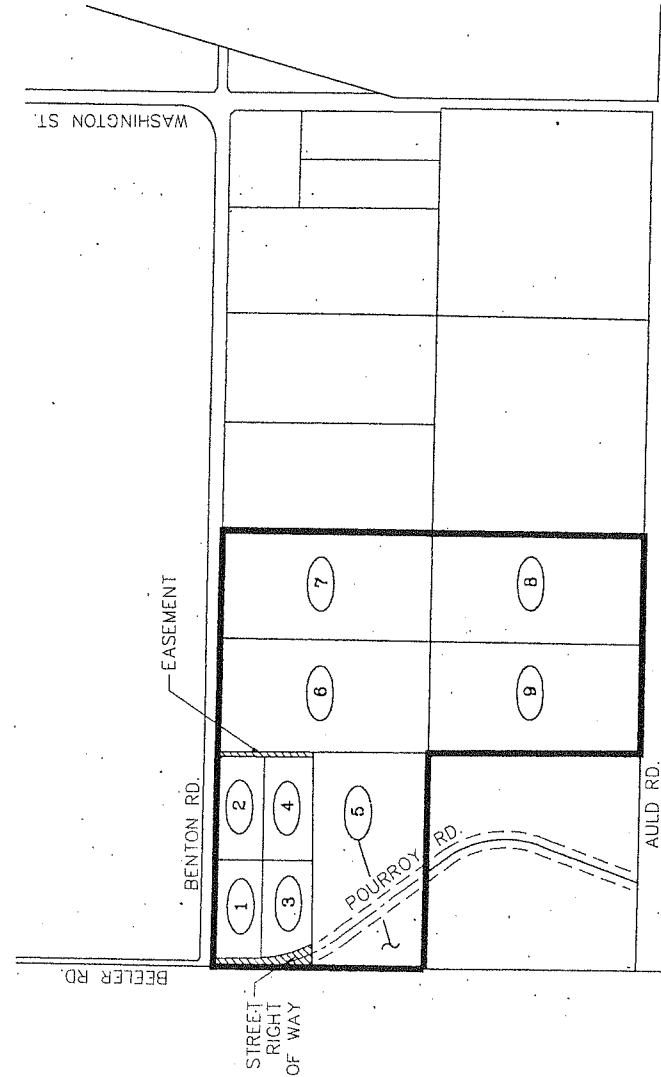


**PROPOSED BOUNDARY MAP OF  
COMMUNITY FACILITIES DISTRICT NO. 2000-1**  
TEMECULA VALLEY UNIFIED SCHOOL DISTRICT  
COUNTY OF RIVERSIDE  
STATE OF CALIFORNIA



LOT DESIGNATION

MAP REF. NO.	RIVERSIDE COUNTY ASSESSOR'S PARCEL NO.
1	958-040-002
2	958-040-003
3	958-040-004
4	958-040-005
5	958-040-006
6	958-040-007
7	958-040-008
8	958-040-017
9	958-040-018

FILED IN THE OFFICE OF THE SECRETARY OF THE BOARD OF EDUCATION THIS 16 DAY OF August, 2000.

*David S. Allen*  
DAVID S. ALLEN  
SECRETARY OF THE BOARD OF EDUCATION  
TEMECULA VALLEY UNIFIED SCHOOL DISTRICT  
STATE OF CALIFORNIA

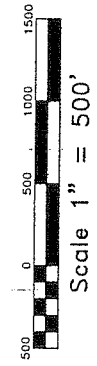
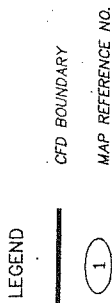
I HEREBY CERTIFY THAT THE WITHIN MAP SHOWING PROPOSED BOUNDARIES OF COMMUNITY FACILITIES DISTRICT NO. 2000-1, TEMECULA VALLEY UNIFIED SCHOOL DISTRICT, COUNTY OF RIVERSIDE, STATE OF CALIFORNIA, WAS APPROVED BY THE BOARD OF EDUCATION AT A REGULAR MEETING HEREOF, HELD ON THE 24 DAY OF August, 2000, BY ITS RESOLUTION NO. 2000-24.

*David S. Allen*  
DAVID S. ALLEN  
SECRETARY OF THE BOARD OF EDUCATION  
TEMECULA VALLEY UNIFIED SCHOOL DISTRICT  
STATE OF CALIFORNIA

FILED THIS 17th DAY OF August, 2000, AT THE HOUR OF 8:00 O'CLOCK  
A.M. IN BOOK 247 AND PAGE 67 OF MAPS OF ASSESSMENT AND COMMUNITY  
FACILITIES DISTRICTS IN THE OFFICE OF THE COUNTY RECORDER IN THE COUNTY OF RIVERSIDE, STATE  
OF CALIFORNIA. FEE: \$ 6.00 No. 2000-322329

*Casey L. Orso*  
CASEY L. ORSO, Deputy  
COUNTY RECORDER  
COUNTY OF RIVERSIDE  
STATE OF CALIFORNIA

NOTE: FOR PARTICULARS OF LINES AND DIMENSIONS OF ASSESSOR'S PARCELS, REFERENCE IS MADE TO THE RIVERSIDE COUNTY ASSESSOR PARCEL MAPS.



Special District Financing  
& Administration, LLC  
333 South Juniper Street, Suite 208  
Escondido, California 92025  
Tel: (760) 233-2630 Fax: (760) 233-2631