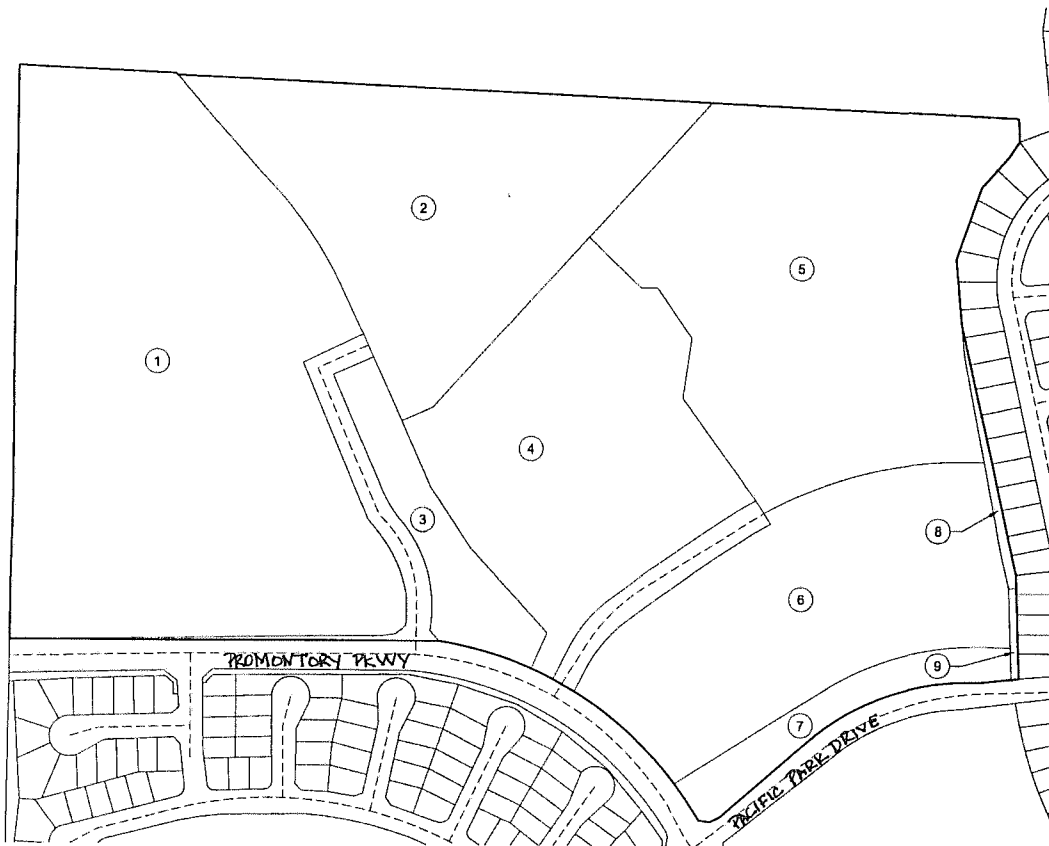


PROPOSED BOUNDARY MAP OF
 TEMECULA VALLEY UNIFIED SCHOOL DISTRICT
 COMMUNITY FACILITIES DISTRICT NO. 2011-1
 COUNTY OF RIVERSIDE
 STATE OF CALIFORNIA

LOT DESIGNATION		
LOT NO.	TRACT NO.	ASSESSOR'S PARCEL
1	31871	964-140-004
2	31871	964-140-002
3	31871	964-140-003
4	31871	964-140-001
5	31871	964-140-015
6	31871	964-140-014
7	31871	964-140-013
8	31871	964-140-019
9	31871	964-140-018



FILED IN THE OFFICE OF THE CLERK OF THE TEMECULA VALLEY UNIFIED SCHOOL DISTRICT THIS 20th DAY OF Oct., 2011.

KRM
 DR. KRISTI RUTZ-ROBBINS
 CLERK OF THE GOVERNING BOARD OF THE
 TEMECULA VALLEY UNIFIED SCHOOL DISTRICT

I HEREBY CERTIFY THAT THE WITHIN MAP SHOWING PROPOSED BOUNDARIES OF COMMUNITY FACILITIES DISTRICT NO. 2011-1 OF THE TEMECULA VALLEY UNIFIED SCHOOL DISTRICT, COUNTY OF RIVERSIDE, STATE OF CALIFORNIA, WAS APPROVED BY THE GOVERNING BOARD OF THE TEMECULA VALLEY UNIFIED SCHOOL DISTRICT AT A MEETING THEREOF, HELD ON THE 24th DAY OF Nov., 2011, BY ITS RESOLUTION NO. 2011-12-15.

KRM
 DR. KRISTI RUTZ-ROBBINS
 CLERK OF THE GOVERNING BOARD OF THE
 TEMECULA VALLEY UNIFIED SCHOOL DISTRICT

FILED THIS 23rd DAY OF November, 2011, AT THE HOUR OF 9:25 O'CLOCK A. M. IN BOOK 75 OF MAPS OF ASSESSMENT AND COMMUNITY FACILITIES DISTRICTS AT PAGE(S) 4 AND AS INSTRUMENT NO. 2011050251 IN THE OFFICE OF THE COUNTY RECORDER IN THE COUNTY OF RIVERSIDE, STATE OF CALIFORNIA.
 FEE: \$10

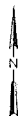
CMorris DEPUTY
 LARRY WARD
 COUNTY RECORDER OF THE COUNTY OF RIVERSIDE
 COUNTY ASSESSOR
 COUNTY CLERK

DEPUTY RECORDER

NOTE: FOR PARTICULARS OF LINES AND DIMENSIONS OF THE ASSESSOR'S PARCELS, REFERENCE IS MADE TO THE COUNTY OF RIVERSIDE ASSESSOR'S PARCEL MAPS.

SDFA
 SPECIAL DISTRICT FINANCING
 & ADMINISTRATION

437 WEST GRAND AVENUE
 ESCONDIDO, CALIFORNIA 92025
 TELEPHONE: (760)233-2630
 FAX: (760)233-2631



LEGEND:

① LOT NUMBER

_____ COMMUNITY FACILITIES DISTRICT BOUNDARY

SHEET	1 OF 1
DATE	OCTOBER 2011
JOB NO.	CFD20111-1011